

Broadband Mapping

Chris Witteman

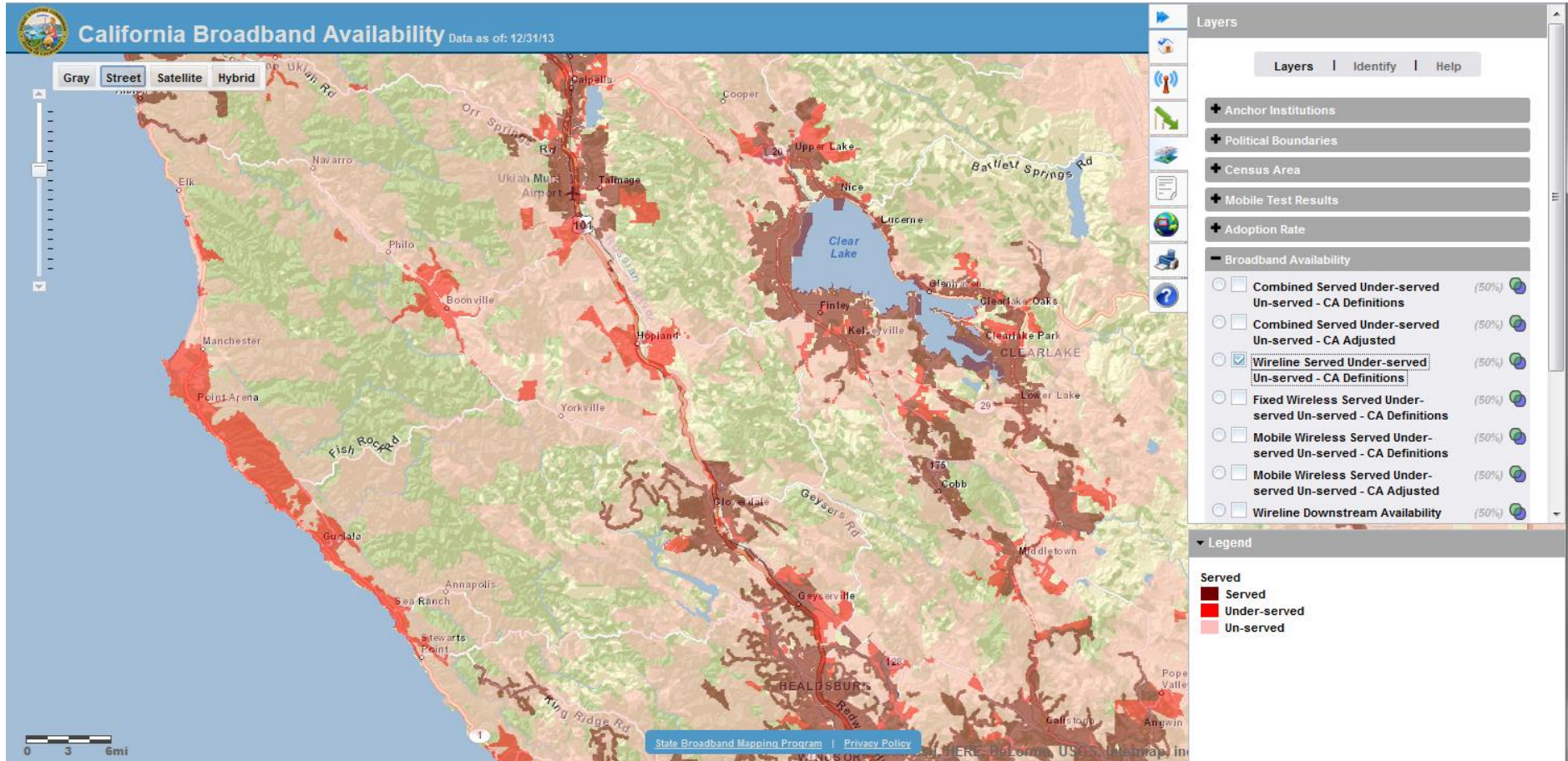
NASUCA

November 18, 2014

What the CPUC Now Has

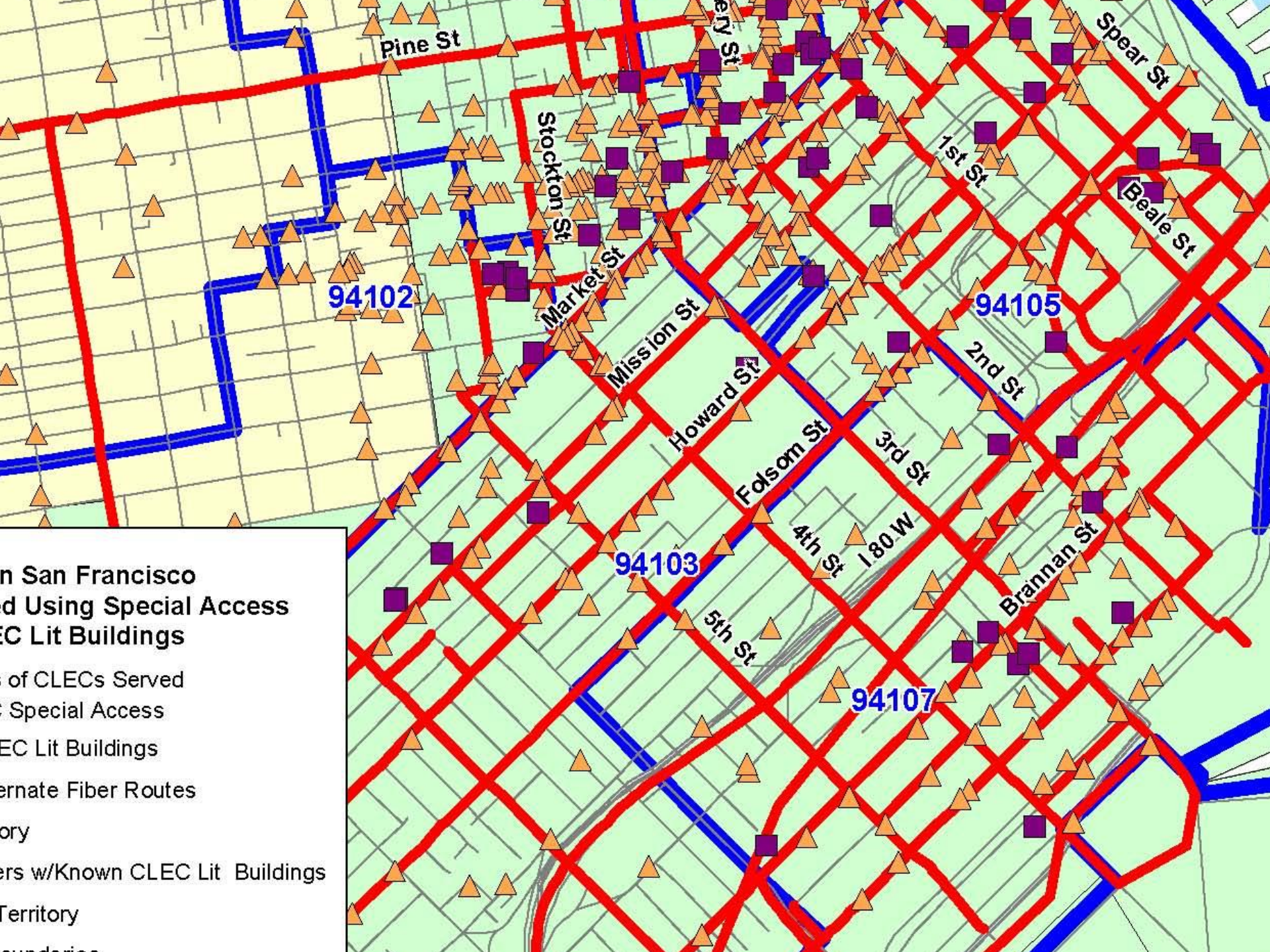
- www.broadbandmap.ca.gov/map

Sample California Broadband Map



What Providers Have

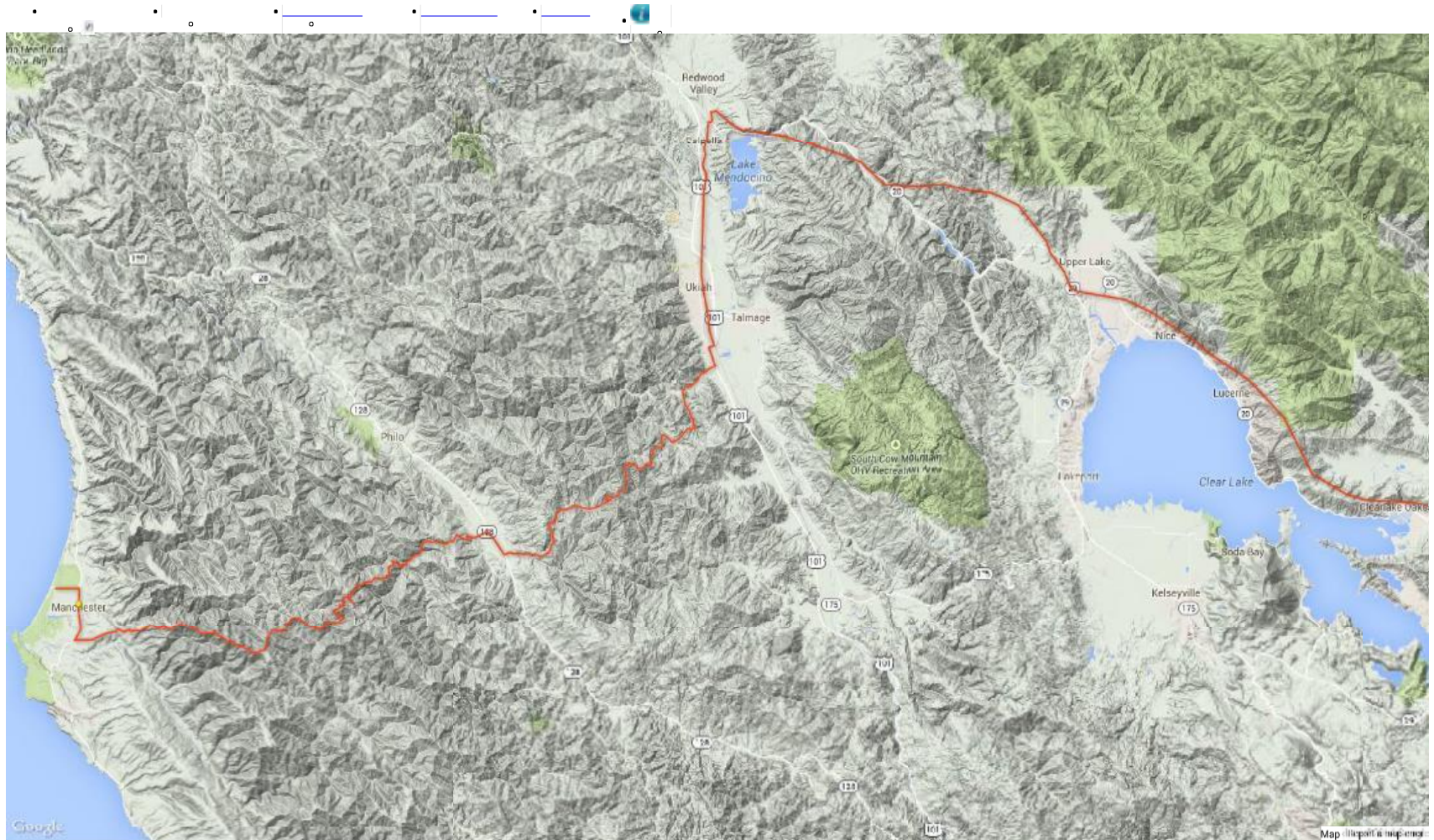
- Here's a map from 2005 AT&T/SBC Merger Proceedings
- And then another one from Level 3's webpage.



**San Francisco
Map Using Special Access
CLEC Lit Buildings**

- Legend
- Primary Fiber Routes
- Alternate Fiber Routes
- City Boundary
- Buildings w/ Known CLEC Lit Buildings
- City Territory
- City Boundary

Level 3 Maps (source: <http://maps.level3.com/default/>)



CPUC Authority to Obtain Information

- **Utilities** – Public Utilities Code §§ 311, 314, 581-84
- **Any Company** – Administrative Subpoena Under Government Code §§ 11181 *et seq.*

Section 706

(47 USC 1302(a))

- The Commission *and each State commission* with regulatory jurisdiction over telecommunications services shall encourage the deployment on a reasonable and timely basis of advanced telecommunications capability to all Americans (including, in particular, elementary and secondary schools and classrooms) by *utilizing*, in a manner consistent with the public interest, convenience, and necessity, price cap regulation, regulatory forbearance, *measures that promote competition* in the local telecommunications market, *or* other *regulating methods* that *remove barriers* to infrastructure investment. (Emphasis added.)

Over/Under Public Rights of Way

